

This is legal to carry into the voting booth.

MONTGOMERY COUNTY Republican Primary Runoff Ballot

Attorney General

Ken Paxton

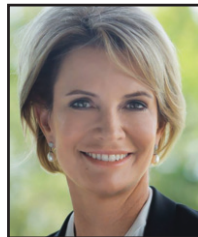
George P. Bush



Commissioner of
General Land Accounts

**Dawn
Buckingham**

Tim Westley



Railroad Commissioner

**Wayne
Christian**

Sarah Stogner



MONTGOMERY COUNTY Republican Primary Runoff Ballot

Attorney General

Ken Paxton

George P. Bush



Commissioner of
General Land Accounts

**Dawn
Buckingham**

Tim Westley



Railroad Commissioner

**Wayne
Christian**

Sarah Stogner



**Early and
Election Day
Voting Locations
And a printable
Sample Ballot**

**Can be found at
www.TerryLowry.com**

**Click:
Voting Information**

**Vote Early
just because you can.**

EARLY VOTING HOURS						
M A Y						
SUN	MON	TUES	WED	THURS	FRI	SAT
8	9	10	11	12	13	14
15	16	17	18	19	20	21
Log onto TerryLowry.com for times & locations.						
22	23	MAY 24 Election Day	25	26	27	28

Tear this page out and use it in the voting booth.